

Massivit 3D Printing Systems

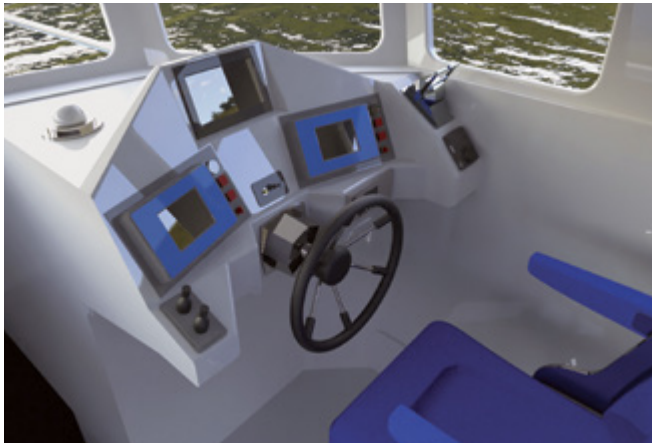


*LARGE-SCALE,
FAST 3D PRINTING*

MASSIVIT

Large, Custom Manufacturing at Unprecedented Speed

Massivit 3D printing systems empower manufacturers and service providers to expedite their lead times with unique Gel Dispensing Printing (GDP) technology.



Installed base
across 40+ countries

Serving a range of industries:

AUTOMOTIVE

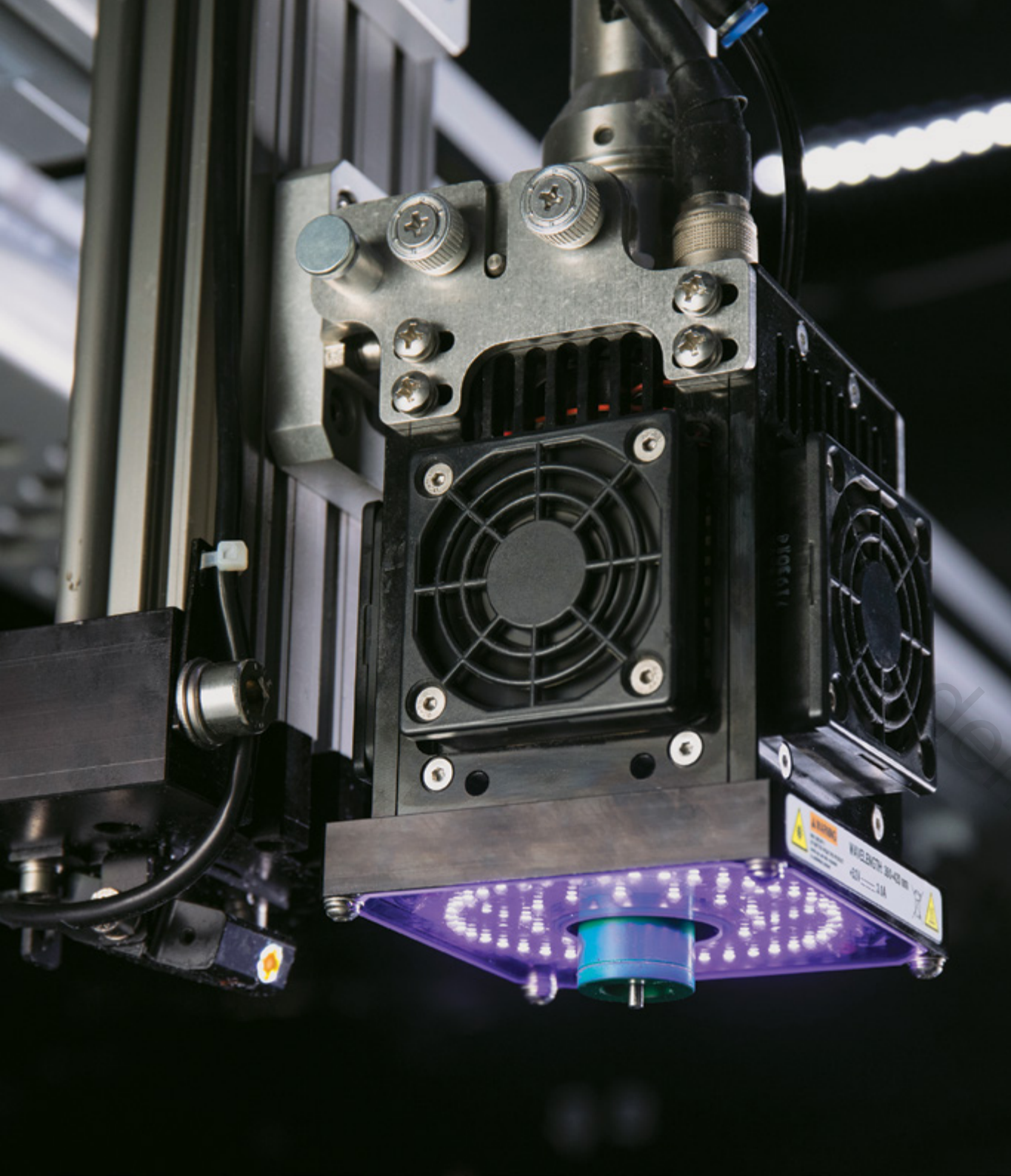
EDUCATION & RESEARCH

ARCHITECTURE

SCENIC FABRICATION

VISUAL COMMUNICATION

MARINE RAIL



30x faster

Produce full-scale prototypes, and parts within a matter of hours, instead of days or weeks. Dual printing heads allow you to create 2 models simultaneously with 2 different materials. Watch your parts instantly cure during printing, providing ready parts straight off the printer.

Full-scale prototypes, molds, parts

Print a single part with a build volume of 145cm x 111cm x 180cm. Eradicate time wasted on producing and joining numerous small parts.

Cost-effective, waste-free

Eliminate the mess, waste, and storage requirements associated with CNC machining and manual labor. Also, unlike legacy 3D printers, Massivit 3D technology prints with practically no support structures.

Complex forms & undercuts

Easily create large, complex forms and undercuts that are unattainable with other technologies. Produce symmetrical parts with precision thanks to automated slicing software algorithms.

A Range of Products to Suit Your Needs



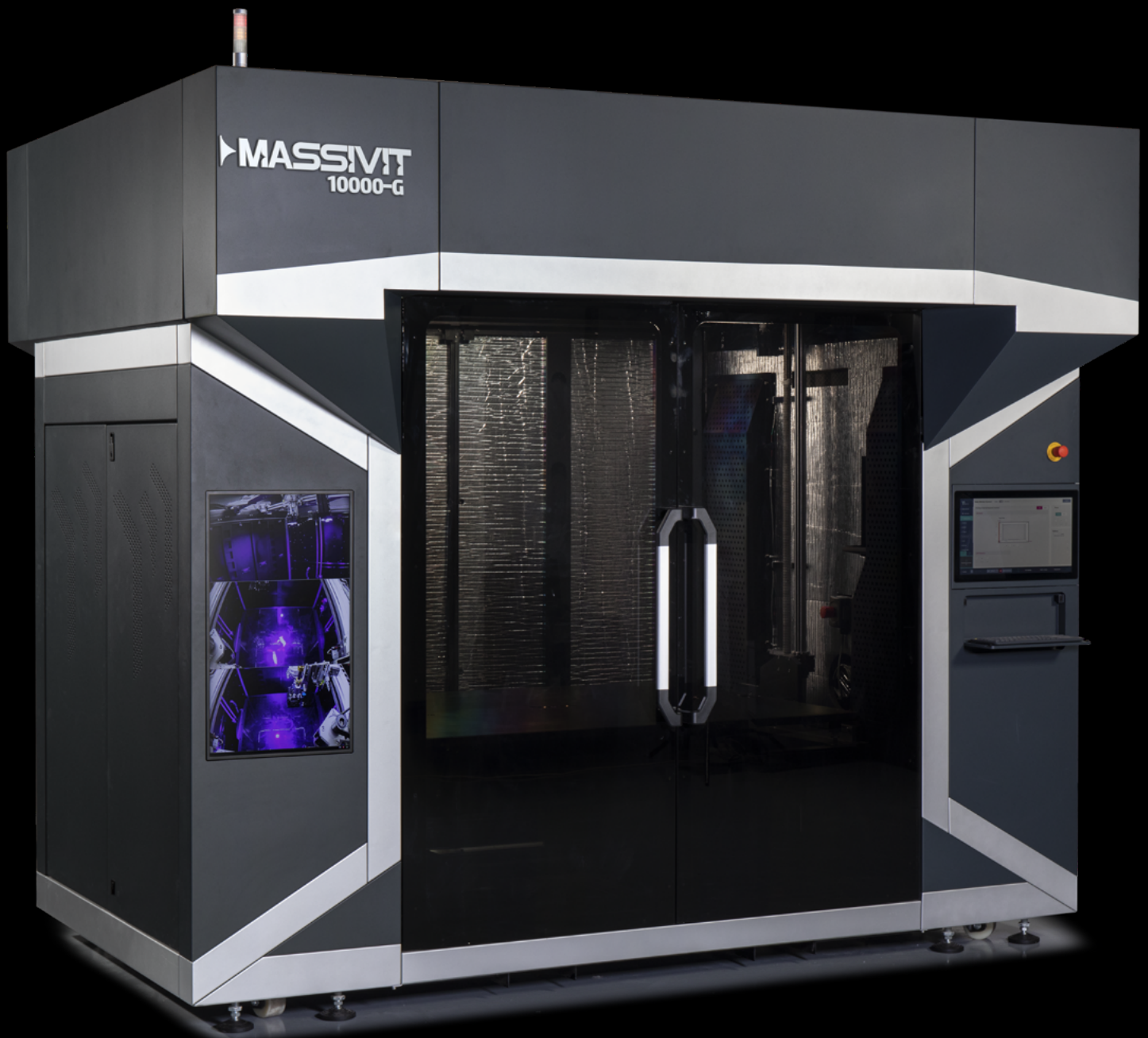
	MASSIVIT 1800	MASSIVIT 1800PRO	MASSIVIT 5000	MASSIVIT 5000MAX
No. of printing heads	1 (Not upgradable)	1 or 2, with option to upgrade	2 printing heads	2 printing heads
Unprecedented printing speed	300mm/sec linear speed. 35cm/13.7" on Z axis per hour. (Printing speed for 1-meter diameter cylinder)			

Experience unprecedented production speed for full-scale prototypes, molds, and parts. Massivit 3D printing systems comprise robust, large-volume hardware, easy, live monitoring via internal cameras and computer vision, user-friendly software, advanced slicing algorithms, and a range of photo polymer materials.

MASSIVIT

10000 & 10000-G

OVERCOMING THE BOTTLENECKS OF MOLD PRODUCTION

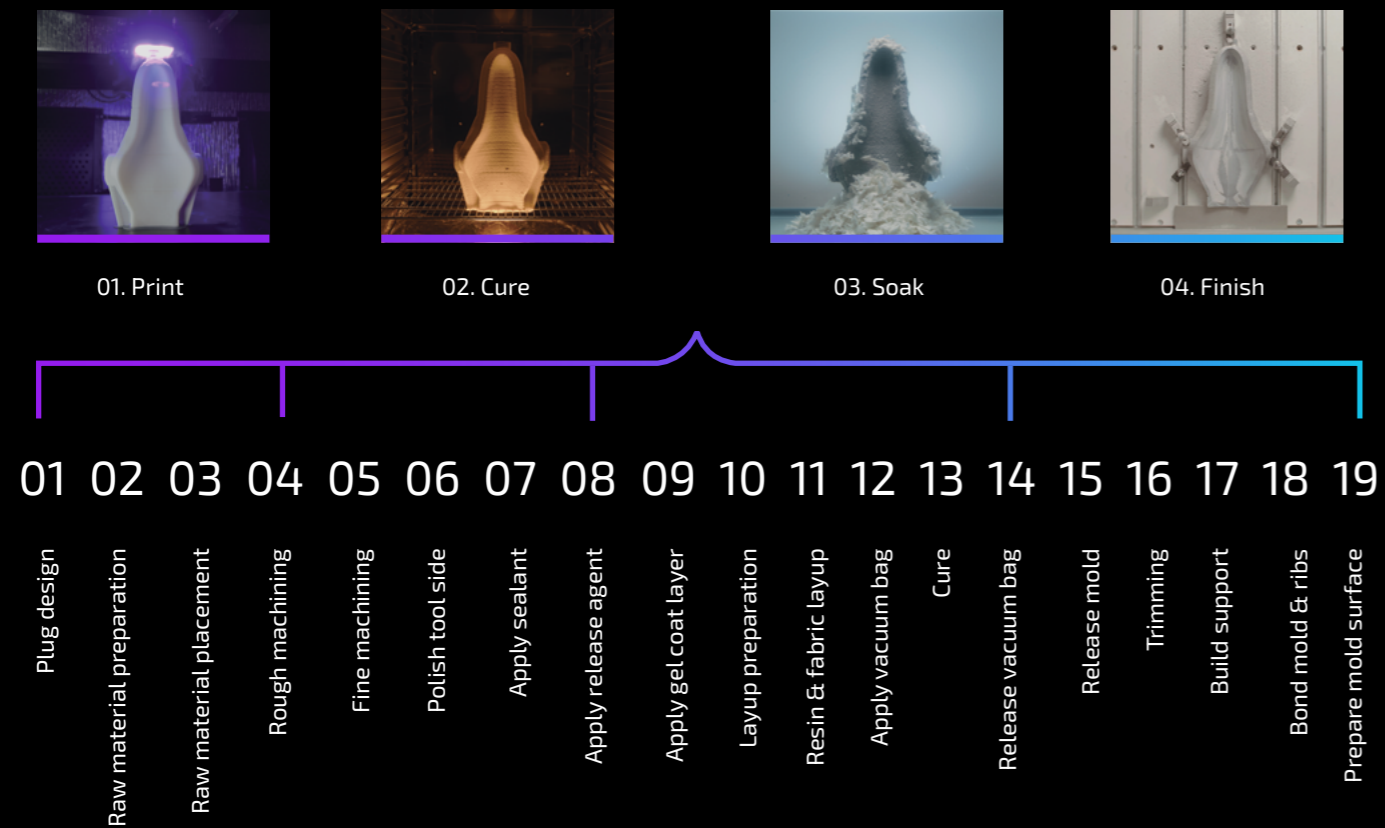


Automate Your tooling

Massivit's Cast In Motion (CIM) technology combines ultra-fast, additive manufacturing technology with high-performance, thermoset materials to enable automated tooling for composites. The Massivit 10000 empowers manufacturers to produce complex, custom molds within a matter of days, instead of weeks.

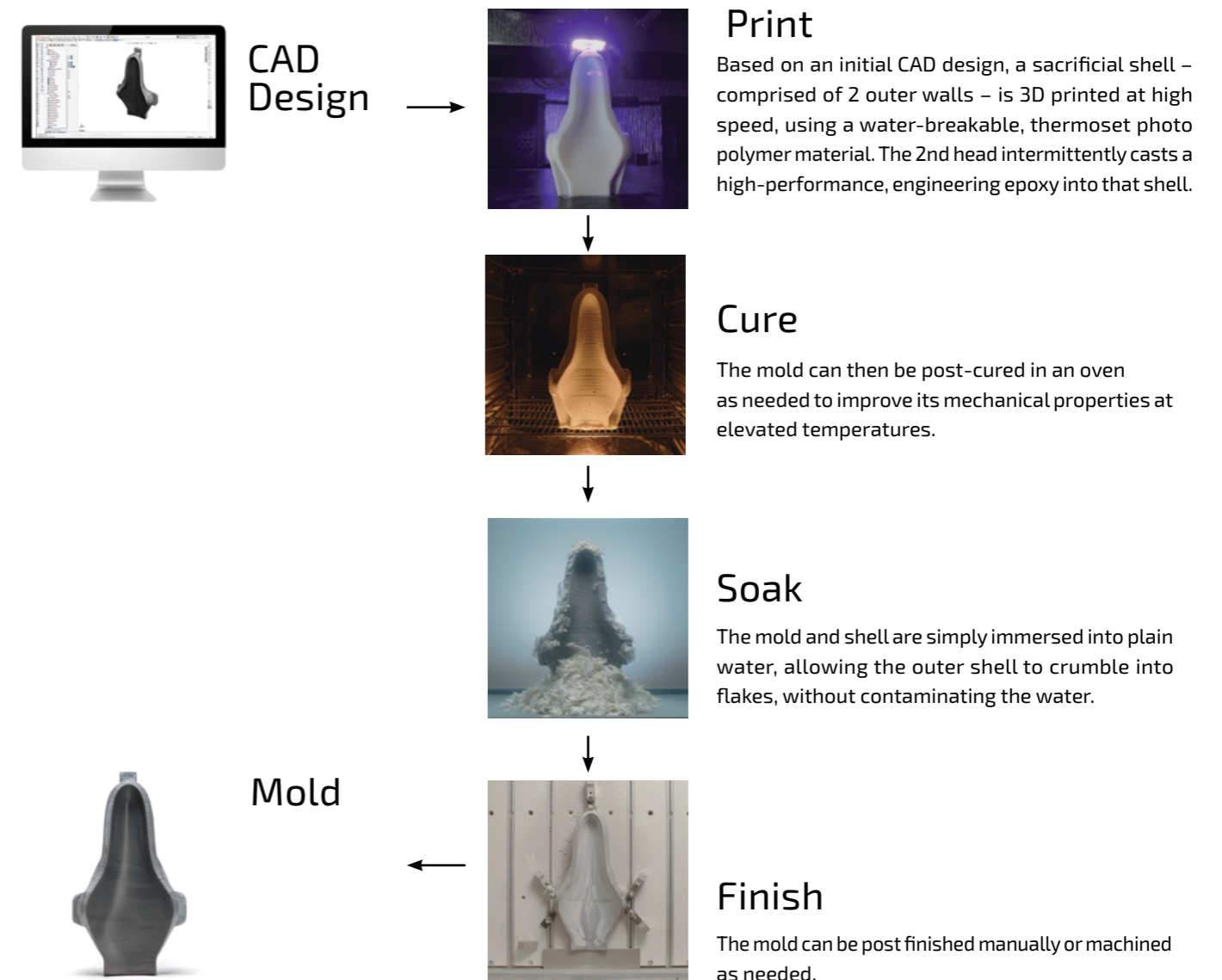
From 19 Steps to 4 Steps

The advent of composite materials has brought significant advancements to the manufacturing arena, including markedly improved strength-to-weight ratios. However, the associated tooling processes have – until now – been slow, costly, cumbersome, and wasteful. Tooling workflows have demanded a minimum 19 production steps and are reliant on high-skilled, manual labor.



Key Benefits for Composite Manufacturing

- Speed up mold production time by 80%
- Reduce manual labor by 90%
- Cut manufacturing costs by 75%
- Eliminate production of a plug or master
- Produce isotropic molds suited to high temperatures
- Reduce waste of expensive materials
- Benefit from high mechanical and thermal properties enabled by advanced thermosets
- Unattended shell removal in which water-breakable material enables the reuse of water

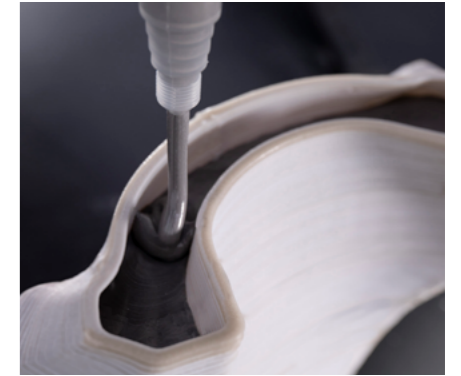




True Isotropy – Advanced Thermosets Offer Predictability

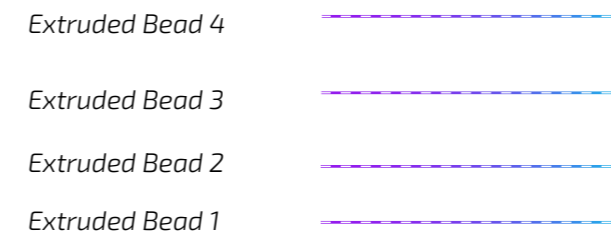
The Massivit 10000 introduces to market the first true isotropic 3D-printed mold for composite manufacturing.

Unlike other additive manufacturing tooling processes – that may result in uneven molecular bonds due to their layering mechanism – Cast In Motion leverages a thermoset casting material that guarantees consistent mechanical and thermal properties across all axes. In particular, it offers a consistent and low thermal expansion (CTE) at high temperatures. It also provides high thermal stability (HDT) up to 152°C.



Thermoplastic AM Extrusion (Filament or Pellets)

Anisotropic

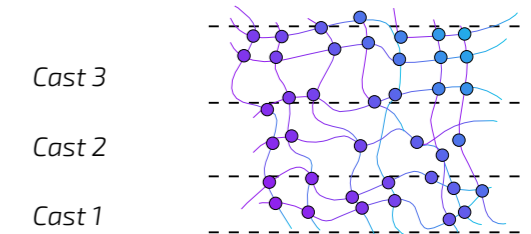


Time intervals between 3D-printed extrusions result in cooling, causing an inconsistent interface between layers, a recognized weakness.

There are no molecular bonds between layers.

Massivit's Thermoset Cast In Motion (CIM)

Isotropic



The Massivit 10000 provides a single, uniform cast. This provides fully cross-linked molecular bonds between casting intervals.

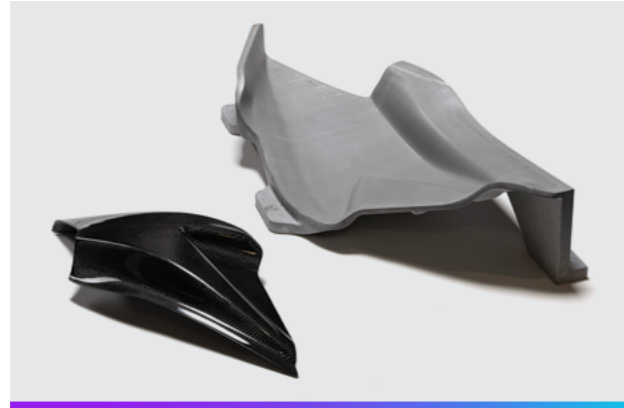
Eco-Tooling – Reducing Waste

By directly casting the mold, Massivit's additive manufacturing technology minimizes material waste associated with multiple stages of conventional tooling processes.

The Massivit 10000 eliminates extensive handling of materials and stocks, enabling a reduced carbon footprint. It facilitates on-site, on demand manufacturing – thereby decreasing transportation and outsourcing requirements.

A Range of Applications

Massivit's cutting-edge Cast In Motion technology enables production of direct molds & tooling for a range of applications. It also allows for jigs and fixtures to be produced simultaneously with their associated mold.



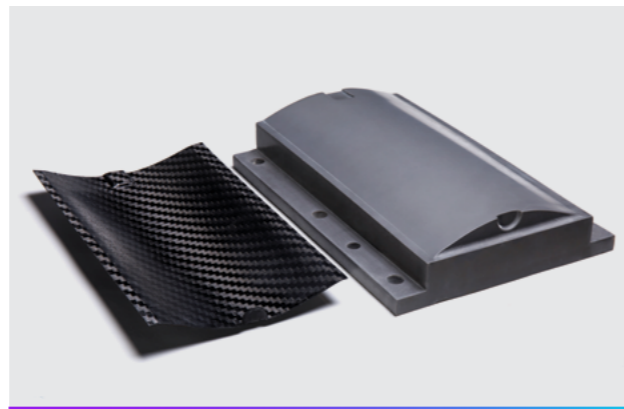
Layup Molds



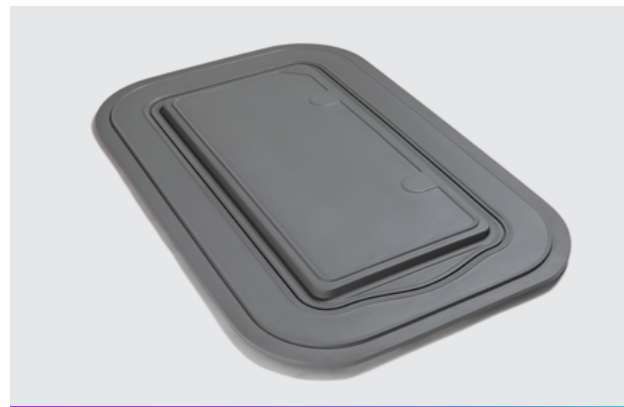
Washable mandrels



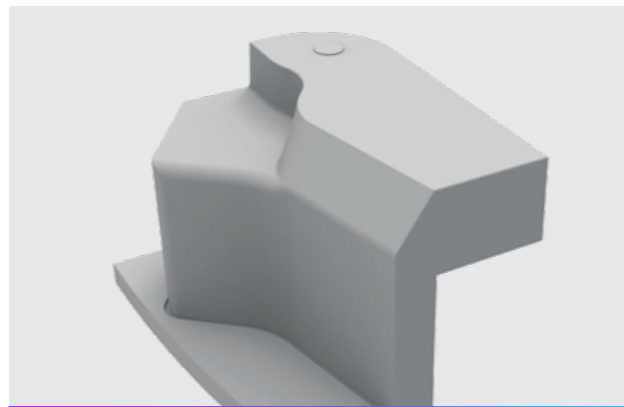
Thermoforming Molds



Molds for Composite Thermoplastics



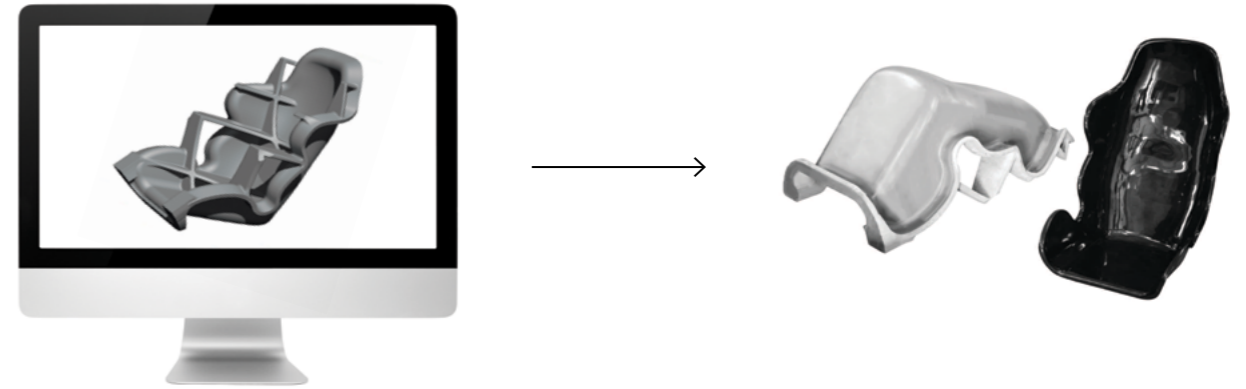
RTM Molds



Master Molds

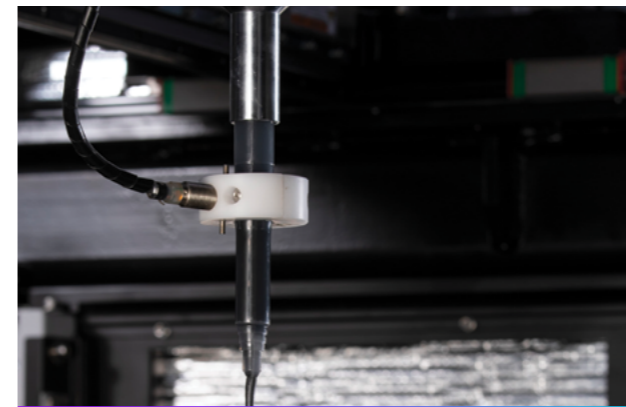
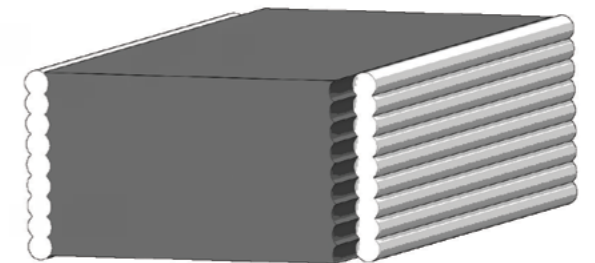
Freedom of Design

Based on proven additive manufacturing technology already adopted across 40 countries, the Massivit 10000 & 10000-G offer complete design freedom for complex molds. Print your mold in one part & from the same material with its ribbing system.

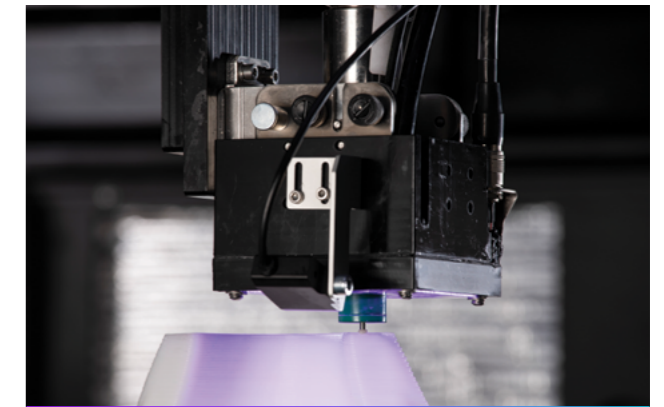


Freedom of Resolution

The separation between the printed shell and the core breaks the correlation between the shell's layer thickness and the mold's width and strength. This allows the creation of strong, thick, isotropic molds without compromising accuracy.



The casted core of isotropic epoxy can at a width of up to 25 mm / 1 in.



The water-breakable shell can be printed with a 0.5 -1 mm / 0.02-0.04 in. layer thickness.

10000-G

The Massivit 10000-G combines Massivit's two key technologies: Cast In Motion (CIM) and Gel Dispensing Printing (GDP). Comprising separate, dedicated material systems, the 10000-G facilitates digital casting and tooling applications, utilizing the water-breakable DIM WB material and CIM 500 casting material, plus access to Massivit's set of Gel Dispensing Printing materials. This facilitates direct custom manufacturing and functional prototyping using Dimengel materials that respond to essential industry requirements.



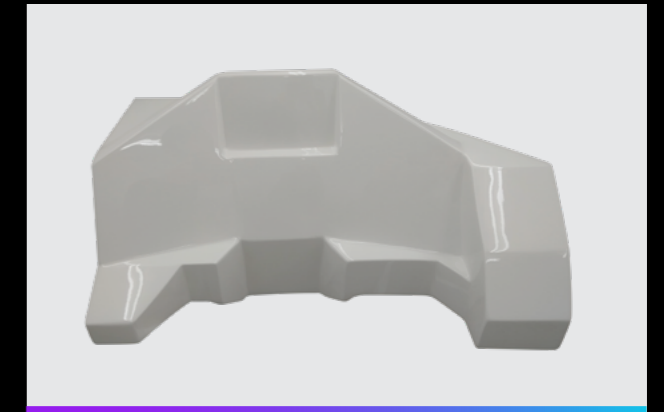
Material	Key Benefit	Massivit 10000	Massivit 10000-G
CIM 500	High Tg & Low CTE	✓	✓
Dimengel WB	Water Breakable	✓	✓
Dimengel 400	Tough, Enhanced HDT		✓
Dimengel 20 FR	Flame-Retardant		✓
Dimengel 90	Cost-Effective		✓
Dimengel 100	General Purpose		✓
Dimengel 110	High-Performance		✓
Dimengel 300	Transparent		✓

10000-G Additional Applications

The Massivit 10000-G directly prints isotropic production molds as well as mockups, jigs, fixtures, and functional prototypes.



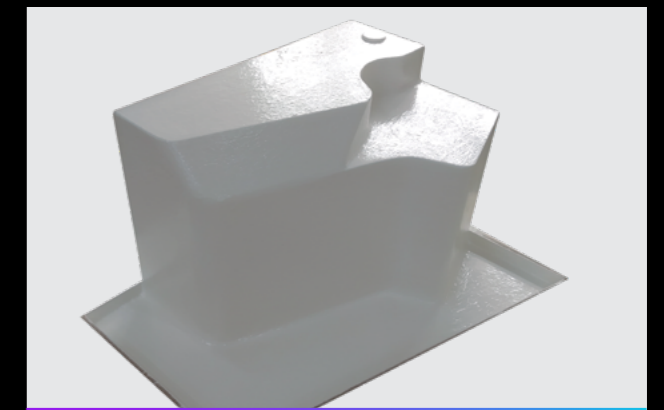
Aftermarket Production



Custom Manufacturing



Jigs & Fixtures



Plugs/masters



Prototypes



Mockups

Image Credits: ©Alstom. Front fairing for REIMS tram 3D printed by Stratiforme Industries. Custom Yacht Dashboard & Vanity 3D Printed by Velum Nautica. Rail Prototype 3D Printed by Stratiforme Industries. Concept Car by Takumi Yamamoto, 3D Printed by Marie 3D.



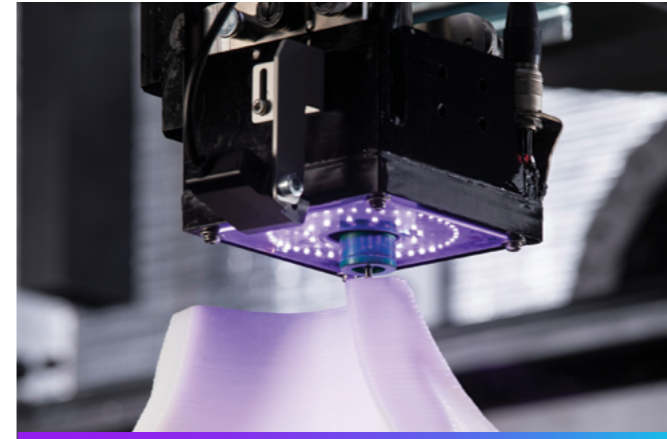
Specs at a Glance

Print Configuration	CIM technology: 1 printing head and 1 casting head
	Thermally-controlled print chamber up to 60°C. Removable & interchangeable print tray. Printed shell layer thickness ranges from 0.5 mm-1.3 mm
Print Volume	W x L x H: 1.42 x 1.11 x 1.5 m / 4'8" x 3'8" x 4'11"
Maximum Object Weight	300kg /660 lbs
Motion System	Linear motors for X/Y print head and servo motors for print tray (Z) height
Materials	CIM 500 casting material and Dimengel water-breakable material
Workflow and Software	Software on machine: proprietary front-end software. Input format: STL. Smart Slicer (CAD SW not included)
System Dimensions	W x L x H: 3.1 x 2.2 x 3.1 m / 10'2" x 7'3" x 10'2"
CMS Dimensions	W x L x H: 1.3 x 1.3 x 1.7 m / 4'3" x 4'3" x 5'7"
System Weight	Unpacked ~3500 kg / 7716 lbs. Packed ~4000 kg / 8818 lbs. CMS Unpacked ~621 kg / 1369 lbs. Packed ~687 kg / 1514 lbs

About Massivit 3D

Massivit Printing Technologies Ltd. www.massivit3D.com (Tel Aviv Stock Exchange: 'MSVT) is a leading provider of large-scale 3D printing systems. The company develops and manufactures technology comprising patented hardware, advanced, thermoset polymer materials, and sophisticated software. Massivit's vision is to transform manufacturing of large parts from traditional processes to ultra-fast, digital fabrication using industrial-grade materials. Founded in 2013, Massivit is headquartered in Lod, Israel. The company provides its customers across 40 countries with end-to-end services, supported via an extensive global dealer network.

Subsystems



UV System

A ring-shaped UV system allows even curing from all directions. The system is water-cooled to allow work inside a heated chamber.



Broadcasting System

Three peripheral cameras transmit the printing progress to a dedicated display and can be viewed remotely.



Static Mixer

The components flow through separate pipes and are only mixed at the exact moment of casting by a static mixer which is easy to clean and replace.

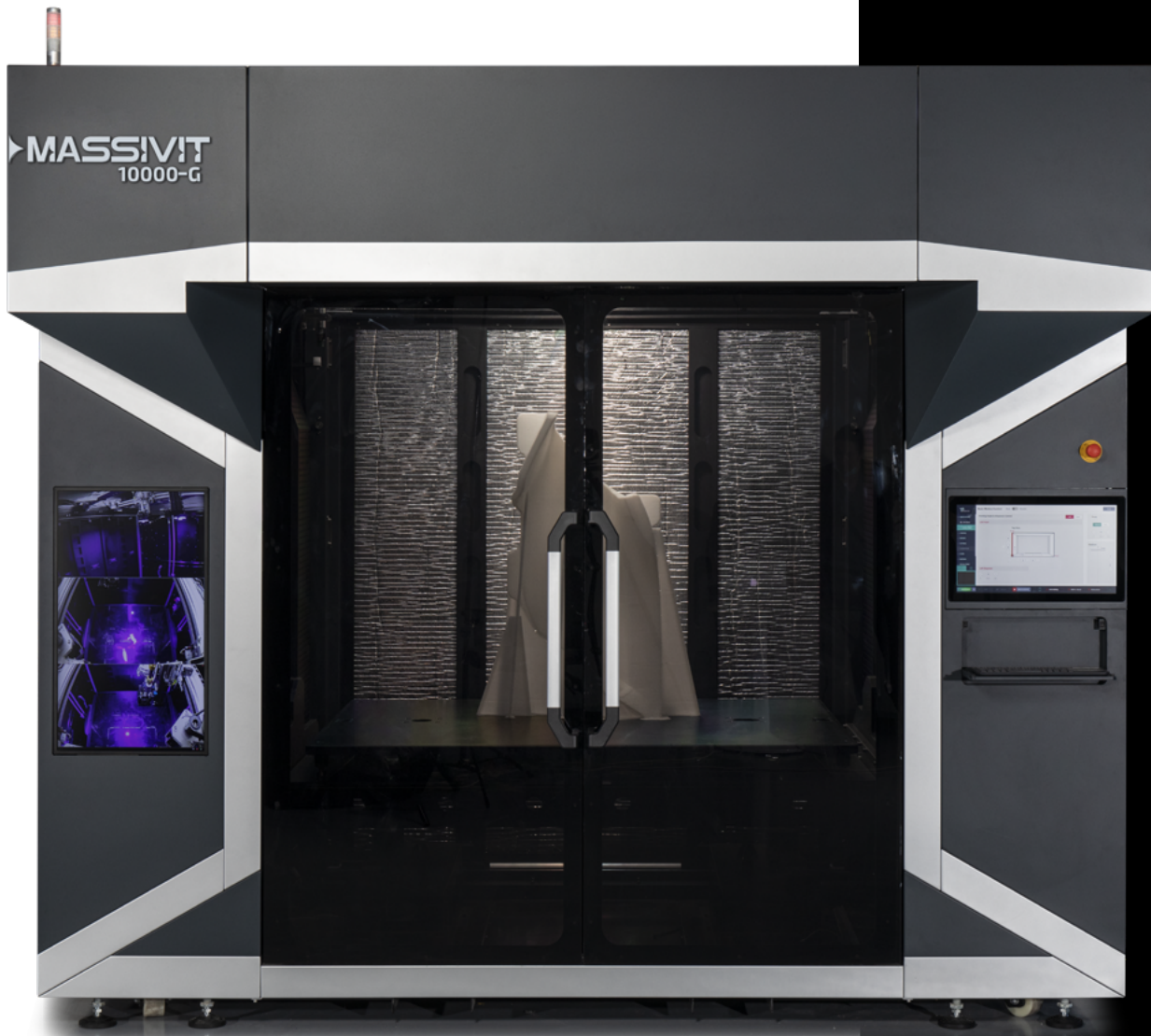


CMS System

An automated casting system dispenses the A&B components according to the required ratio. The system heats up the two components to ensure a streamlined flow.

Achieve the Extraordinary

MASSIVIT



For further information about automated tooling, please contact us:

info@massivit.com | www.massivit3D.com
T. +972-8-6519486 | F. +972-73-2571232



Scan to watch the video

Follow Us:



© 2023 Massivit 3D Printing Technologies Ltd. All rights reserved. Massivit™, Massivit 3D™, Massivit 10000™, Massivit 3D logo are trademarks of Massivit 3D Printing Technologies Ltd. All other brand names are the property of their respective owners.

	MASSIVIT 1800	MASSIVIT 1800PRO	MASSIVIT 5000 / MASSIVIT 5000MAX
Layer thickness	<ul style="list-style-type: none"> • Normal (1.3mm) • Quality (1mm) • High Resolution (0.8mm) 	<ul style="list-style-type: none"> • Normal (1.3mm) • Quality (1mm) • High Resolution (0.8mm) 	<ul style="list-style-type: none"> • Fast (1.5mm) – Double the speed for large, robust models. • Normal (1.3mm) • Quality (1mm) • High Resolution (0.8mm) • High Definition (0.5mm) – Extra smooth, fine details.
Special printing modes		<ul style="list-style-type: none"> • Mega-Quality (Rapid, high quality printing of large objects allowing gel cost efficiency) • Variable Resolution (Predefine multiple resolutions per model according to required strength and quality) • Mold Mode (Produce architectural elements, restorations, street furniture.. with concrete or plaster casting) 	<ul style="list-style-type: none"> • Mega-Quality (Rapid, high quality printing of large objects allowing gel cost efficiency) • Variable Resolution (Predefine multiple resolutions per model according to required strength and quality) • Mold Mode (Produce architectural elements, restorations, street furniture.. with concrete or plaster casting)
Maximum printing volume	145cm x 111cm x 180cm or 57" x 44" x 70"		
Supported materials	<ul style="list-style-type: none"> • Dimengel 90 – All-purpose, cost-effective • Dimengel 100 – All-purpose/ translucent • Dimengel 300 –Transparent 	<ul style="list-style-type: none"> • Dimengel 90 – All-purpose, cost-effective • Dimengel 100 – translucent • Dimengel 300 –Transparent 	<ul style="list-style-type: none"> • Dimengel 400 –Enhanced impact & HDT/ dark grey • Dimengel 20-FR –Flame-retardant • Dimengel WB –Water-breakable [Only available with 5000MAX] • Dimengel 90 – All-purpose, cost-effective/ grey • Dimengel 110 – High-performance/ translucent • Dimengel 100 – General purpose / translucent • Dimengel 300 –Transparent
Workflow efficiency: Material system	Single material system		Double material system Print with a different material on each print head according to application requirements.
Workflow efficiency: Monitoring mechanism	Auto cleaning (time-based)		Print head camera with image recognition provides automated, efficient cleaning as required.
Workflow efficiency: Massivit SMART Slicer	Integrated user-friendly software plus 1 Massivit SMART Slicer license (purchased separately). Sophisticated algorithms for easy file preparation. Includes instant Estimator Tool.	Integrated user-friendly software plus advanced Massivit SMART Pro Slicer (purchased separately). Sophisticated algorithms for easy file preparation. Includes Estimator Tool plus additional features and modes such as Mold Mode, Variable Resolution, and Mega-Quality.	Integrated user-friendly software plus advanced Massivit SMART Pro Slicer (purchased separately). Sophisticated algorithms for easy file preparation. Includes Estimator Tool plus additional features and modes such as Mold Mode, Variable Resolution, and Mega-Quality. Additional automation features to increase workflow efficiency.
Workflow efficiency: Advanced monitoring	Camera on printing head tip for monitoring.	Camera on printing head tip for monitoring.	Camera on printing head tip for monitoring. Additional 40" flat panel screen displays live output from 3 internal cameras plus recording capability for marketing purposes.
Remote control	Remote monitoring, operations and support available via a range of computers, tablets, and phones.		Remote monitoring, operations and support available via a range of computers, tablets, and phones.

Massivit 3D Printing Technologies Ltd. (www.massivit3D.com) is a leading provider of large-scale 3D printing systems for the Automotive, Marine, Rail, Architecture, Energy, Entertainment, and Education industries. Backed by 50 live patent assets, the company's Gel Dispensing Printing (GDP) technology empowers manufacturers, fabricators, and service providers to produce full-scale prototypes, molds and parts at unprecedented speed.

Founded in 2013 by a team of 3D printing and 2D printing experts, Massivit 3D is headquartered in Lod, Israel and provides its customers across 40 countries with comprehensive services via an extensive dealer network.





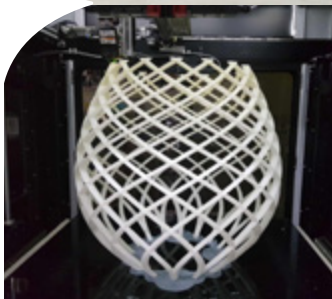
MASSIVIT

Contact us to learn more about
large-scale, fast 3D printing

www.massivit3D.com | info@massivit.com
T. +972-8-6519486 F. +972-73-2571232

Image credits:

[Page 2] Yacht Custom Dashboard 3D Printed by Velum Nautica, Toyota Supra MK5 Wide Body Kit Launch 3D Printed by BCT Entertainment for STREETHUNTER DESIGNS. Warrior Troll 3D Printed by SEEN Technology for Fortress Australia. [Page 6&7] Yacht Stern Extension 3D Printed by Velum Nautica. [Back Cover] Left side motorcycle and right side printed part: Grand Prix Moto3 Class Seat 3D Printed by Velum Nautica. Sculpture by MISUNG. Electric Vehicle Functional Prototypes 3D Printed for IFEVS Microfactory.



Follow Us:



©2023 Massivit 3D Printing Technologies Ltd.
All rights reserved.

Massivit™, Massivit 3D™, Massivit 5000™, Massivit 5000MAX™, Massivit 1800 Pro™, Massivit 1500™, Dimengel™, Massivit logo™, are trademarks of Massivit 3D Printing Technologies Ltd. All other brand names are the property of their respective owners.