

CMF LabSystem

The simple solution to reduce cost and fast-track your application development for testing & small series.



 SINTRATEC



 **LÖMI**
PROCESS TECHNOLOGY



CARBOLITE
GERO 30-3000°C

COLDMETAL
FUSION

The key benefits.

Delivering metal injection molding quality at the invest of metal FDM, the CMF LabSystem solution is a easy toolbox for fast application and process development. Once implemented, scale-up to production solutions is simple and easy.



Scalable quality

This solution delivers the good surface qualities of SLS printing and mechanical properties of MIM, which you can easily scale from 1 - 1,000,000 parts per year with the same process & materials.



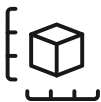
Fast, clean material switch-over

Material preparation, printing and depowdering are integrated in a closed and semi-automatic system. Several units allow you to carry out material changes within a short time without cleaning.



Compact Form Factor fits most doors

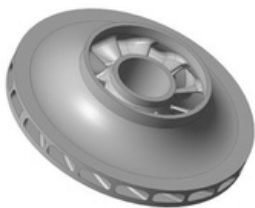
Optimized for lab and workshop environments with narrow doors (90 cm).



Fits your big projects

With a tube diameter of 180 mm, the furnace fits your big projects. Furnace Tube Size 300 mm (Length) x 180 mm (Diameter)

Productivity.



Pump Impeller

Size:	64 x 64 x 12,5 mm
Weekly Throughput:	40
Annual production capacity:	2.000*

*Sintering capacity decides over total output. Large economies of scale possible in other solutions with furnace capacities up to 600 Liters.



The system overview.

See technical product datasheet & brochure of respective product for details.



SINTRATEC

8 Liters SLS Printer Cell

The modular Sintratec S2 starter cell with a cylindrical build space of 160 mm (D) x 400 mm (H) is a modular, self-contained SLS solution that can be expanded as needed and comprises all required equipment:

- Laser Sinter Station (LSS)
- Material Core Unit (MCU)
- Material Handling Station (MHS) for depowdering
- Steel powder drum & vacuum cleaning solution



30 Liters Debinding Station

Integrated solvent debinding- and solvent recycling station. Optimized for CMF binder-component extraction with solvent. Closed Loop System ensures maximum safety and solvent reuse through dirt-tank to clean-tank distillation. Large tank to ensure maximum "freshness" of solvent during debinding.



8 Liters Tube Sintering Furnace

Automatic tube sinter furnace optimized for ColdMetalFusion. The furnace has two heating zones and is equipped with additional heat shielding for optimized temperature homogeneity.

- Working volume: 300 mm (Length) x 180 mm (Diameter)
- Up to 1300°C operating temperature
- Touch panel control with CMF sinter programs

The available materials.

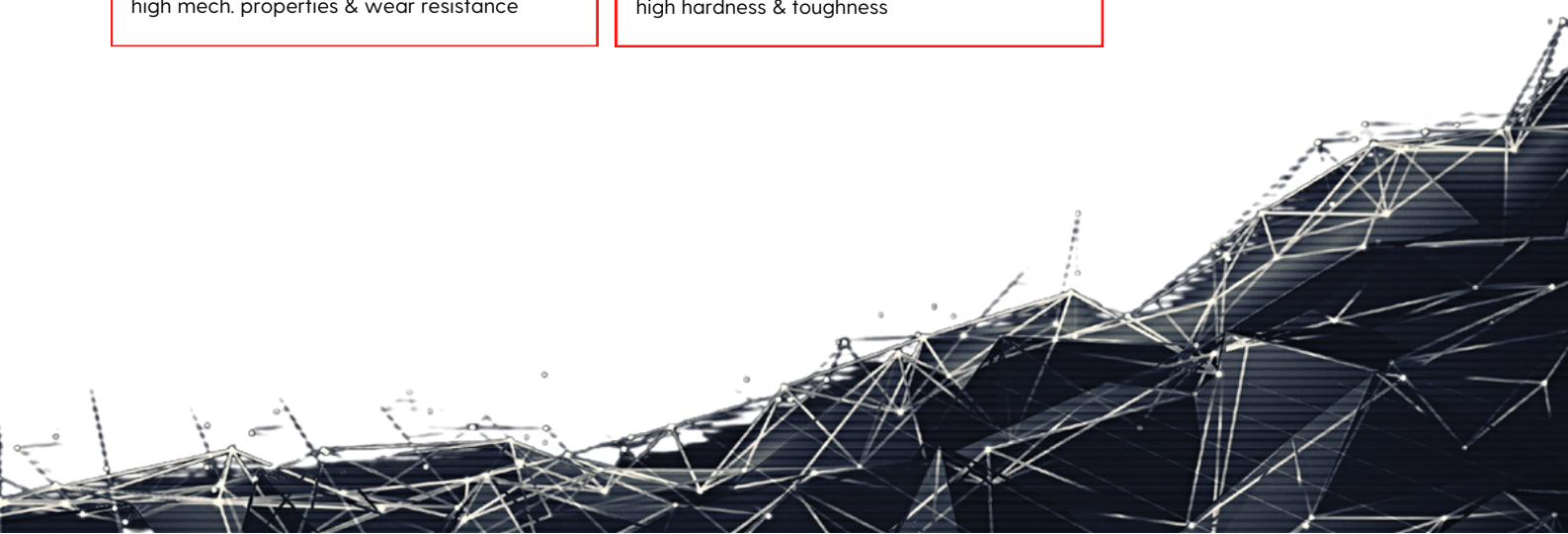
Stay tuned for more materials...

17-4PH Stainless Steel

high mech. properties & wear resistance

M2 Tool Steel

high hardness & toughness



We have more solutions.

The Alliance have developed solutions for you based on proven equipment with tens of years of product development behind it. Pick a standard solution or show us your production part and we will create the perfect tailor-made solution for your business needs. Get best in class products from the leaders in their field and start your reliable production.



SINTRATEC



LÖMI
PROCESS TECHNOLOGY



CARBOLITE
IGERO 30-3000 °C

Get In Touch.



LinkedIn

/company/ColdMetalFusion



www.coldmetalfusion.am



info@coldmetalfusion.am

COLDMETAL
FUSION